

Lenovo Mobile

Manual Models: Lenovo

A588t

Please read the manual carefully before operating

Thank you for using Lenovo products, please read the manual carefully before operating.

This item is limited (except Hong Kong, Macao and Taiwan regions) within the territory of People's Republic of China sales.

Lenovo's policy of continuous development. Therefore, the association reserves the right without prior notice to any product described in this manual to make changes and improvements right.

The contents of this manual "as is". Unless otherwise provided by applicable law, NO WARRANTIES this manual, reliability, and content to make any kind, either express or implied warranties, including, but not limited to, warranties of merchantability and fitness for a particular purpose of the guarantee. Lenovo without prior notice at any time amend or withdraw this manual rights reserved. If you need updated manual **(electronic version), please visit: <http://www.lenovocare.com.cn> .**

Purpose of this manual is to help you in the proper use Lenovo products do not represent any description of the product's hardware and software configurations. For configuration, please refer to the product associated with the contract (if any), or consult your vendors sell products. Pictures in this manual are for reference only, such as

If discrepancies individual pictures and in-kind products, please prevail in kind to the product. Many network functions described in this manual are special services provided by the network operator, the ability to use these features depend on your network service network operator.

This manual is protected by copyright laws and regulations, without prior written authorization from Lenovo, you may not be reproduced in any form, copied this manual, or the manual transmission in any form on any wired or wireless network, or translate the manual into any text.

If you find this product in the course of the actual situation and the inconsistency between this manual, or if you want to get the latest information, or if you have any questions or ideas, please contact or visit:

- **Lenovo Mobile Order Hotline: 400-819-7777**
- Lenovo Mobile Mall official website:
<http://shop.lenovomobile.com>
- **Lenovo phone hotline: 400-818-8818**

"Legend", "Lenovo", "Lenovo Legend" and other Lenovo logo are trademarks of Lenovo owned enterprises. Company names mentioned in this manual, product or service names may be trademarks of Lenovo Group-owned enterprises or other companies.

table of Contents

Article 1 chapter Safety and maintenance	7
Article 2 chapter Lenovo Smartphone Q & A	15
Article 3 chapter Installing and charging	20
3.1 Install mobile	20
3.2 Remove the battery, USIM / SIM Cards and memory cards	24
3.3 To charge the phone	26
3.4 Startup and shutdown	27
3.5 Security Code	27
Article 4 chapter Phone overview	29
4.1 Phone Appearance	29
4.2 Phone keypad description	31
Article 5 chapter Main Features Guide	32
5.1 dial number	32
5.2 Contacts	32
Article 6 chapter Enter the text	33
Article 7 chapter Lenovo's mobile Internet products	34
7.1 Music Store	34
7.2 Shipping safety	36

7.3 cloud service	37
7.4 Eggplant fast pass	39
Article 8 chapter Features Quick Reference	40
Article 9 chapter common problem	42
Article 10 chapter Technical Parameters	46
Article 11 chapter Important Safety Information - Electromagnetic radiation performance indicators (SAR)	47
Article 12 chapter Important safety information - medical equipment	49

Article 1 chapter Safety and Maintenance

When using the phone, please observe the following precautions:

- Before using, please read the manual.
- When asked to use the phone use is prohibited or can cause interference or danger, please do not boot.
- On the plane, always keep the phone off. If you set your phone alarm clock, calendar and other functions with automatic power-off state, check and cancel the settings before boarding.
- When using the phone, away from heat, high voltage environments, such as appliances or electric cooking equipment.
- Attention to fire prevention. Near gas stations, fuel depots and other flammable materials, please shut down.
- Hand-held mobile phone while driving is prohibited. Do not place the phone over the air bag or in the after air bag deployment can reach areas, in order to avoid the air bag inflates, the phone by the strong force, may cause you serious injury.

- Use only approved by the Company and other standard battery chargers and accessories. Accessory for any consequences arising from the use of third party caused by the Company does not assume
- Prohibited disassemble the phone.
- It would otherwise interfere with the phone close to other electronic equipment. Please stay away from electronic equipment such as televisions, radios, personal computers, pacemakers and hearing aids and other equipment. Non put the phone near credit card or magnetic field. In a hospital or other special places, please follow the relevant provisions of the special places to use your phone.
- The phone is strictly prohibited subject to mechanical vibration or shaking. Non-tap the screen with a sharp object.
- The use of mobile phone sets may damage the phone shell coating.
- Do not use solutes, such as benzene, thinner or alcohol, wipe the phone shell. Do not leave corrosive chemicals, cleaning agents contacted the phone. Only use a soft, clean cloth and gently wipe your phone.
- Phone prohibited prolonged exposure to sunlight, or excessive smoke and dust.

- Keep the phone dry, do not use in high humidity environments such as bathrooms. The device is not waterproof, it is strictly prohibited rain or moisture.
- When you want to unplug the charger from your phone, pull the plug grasp, pull the power cord is prohibited.
- Do not rely solely on a mobile phone as a communication tool in times of emergency, such as medical emergencies.
- Hold the phone in a safe place out of the reach of children to avoid danger.

When using the battery, please observe the following precautions:

- Before using, please read the manual and the surface of the battery identification.
- In a cool, ventilated room to charge the battery. Otherwise, charging excessive ambient temperatures can cause the battery heat, smoke, fire or deformation, or even explode.
- Battery internal special protection circuits and devices is strictly prohibited disassemble the battery, otherwise it will cause a short circuit or electrolyte leakage. If the fluid gets into the eyes there is risk of blindness. Then immediately rinse your eyes with clean water (do not

To rub the eyes), and immediately to the hospital.

- Non extrusion batteries, non-mechanical vibration or shaking the battery, non-short circuit the battery, as this may damage the battery or connect to the elements. Short-circuited by metal objects (eg: coins, pen and back shaped clip) directly to the battery positive and negative connections cause, so the battery with metal objects together is strictly prohibited.
- Keep the metal contacts and battery clean.
- Do not use damaged or exhausted battery.
- Please replace the battery when you can not meet the performance requirements. The battery can be recharged hundreds of times until it needs to be replaced. The battery is a consumable, though it can be charged and discharged hundreds of times, but its power will slowly decrease. When you find the time (talk time and standby time) is significantly reduced, that should replace it with a new battery.
- The battery is strictly prohibited prolonged exposure to sunlight, or excessive smoke and dust. Prohibited in high humidity environments such as bathrooms. The battery is not waterproof, it is strictly prohibited rain or moisture.
- Prohibited place the battery in hot or cold places, warm

Higher than 50 ° C (122 ° F) Or below - 10 ° C

(14 ° F Under) environment will affect battery performance.

- It is forbidden to dispose of batteries in fire as they may explode.
- The battery is strictly prohibited on the water, so as not to cause an internal short circuit, causing the battery heat, smoke, deformation, damage, or even explode.
- Press Dispose of batteries (such as recycling), not dispose as household waste, so as not to cause an explosion and pollution.
- The battery can only use a dedicated charger, not in **0 ° C to 45 ° C (32 ° F to 113 ° F) Outside the charging temperature** range, and continuous charging time shall not exceed **12 Hours.**
- Keep your battery out of reach of children in a safe place, to prevent the danger.

When using the charger, please observe the following precautions:

- Before using, please read the manual and the surface of the charger logo.
- Do not disassemble or modify the charger, is strictly prohibited in the power

By using the charger damaged, otherwise it will cause electric shock, fire and charger damage.

- Non charger with wet hands. If the charger come into contact with water or other liquids, to cut off the power supply immediately.
- Non-short-circuit the charger, the charger is prohibited mechanical vibration or shaking prohibited direct sunlight, high humidity in the bathroom prohibited place using the charger. Charger is not waterproof, it is strictly prohibited rain or moisture.
- Do not use the charger in the vicinity of Electric TV, radio and the like.
- To seize the charger when pulling the plug, pull the cord may damage the wires.
- Keep the charger in a safe place out of the reach of children to avoid danger.

When using headphones (you may need to purchase additional headset),

Please observe the following precautions:

- Note that when using the appropriate volume control headset, so as not to damage your hearing.
- Do not pull hard headphone cable, so as to avoid fracture now

Like.

- Use the headset for a long time in hot and humid places, likely to cause damage or reduce the life of the headset.
- Driving a car, cycling or walking on the road, do not use headphones, otherwise easily lead to traffic accidents.
- Keep the headset out of reach of children in a safe place, to prevent the danger.

Safety Alert

Please upgrade the phone system via the official Lenovo service outlets or phone comes with the system upgrades. As other ways to upgrade the system, may result in equipment malfunction or loss of data, and cause the system security capabilities are destroyed, triggering a security risk. Therefore, problems caused by Lenovo does not assume responsibility for maintenance.

Environmental and recycling information

"Waste electrical and electronic products recycling regulations" prompt note:

Lenovo encourages users have the Lenovo brand products when such products are no longer needed, the compliance with national waste e

Product Recycling relevant laws and regulations, be handed over to the local recycling having a nationally recognized qualification of vendors for recycling. For more information about recycling services, please visit: [http://support1.lenovo.com.cn/lenovo/wsi/activity / 551.htm](http://support1.lenovo.com.cn/lenovo/wsi/activity/551.htm) .

Article 2 chapter Lenovo Smartphone Q & A

Q : Will this smart phone using what operating system

EC?

A : The phone uses Android Operating system, the operating system from 2007 Since launch has been widely recognized by mobile phone users. Currently, Android Operating system has one of the smart phone operating system is the world's largest user.

Q : Will Lenovo mobile phone how to install third-party applications?

A : Lenovo smartphone has been preset at the factory on a variety of popular applications, to meet the basic needs of ordinary users. You can also from the electronic market (such as: music store) to download and install other third-party applications and third-party management software, or by USB A copy of the data lines to third-party applications on your phone and install it. Please note that only the application of the association is the result of pre-association test and ensure the use of other users to download applications require that the application through Google License and obtain a digital signature can guarantee the results. If the user needs to install a non Google Award

Right application, you need to **Main Menu -> Settings -> Security Check in Unknown sources** This option. Installation of non-certified application there is a risk that all the hardware and software problems caused users to install unauthorized applications caused the association does not assume responsibility for maintenance. Lenovo recommends that users try to do

Q : Will download and install third-party applications to charges

?

A :Currently Android More than half of the applications are free to install and do not need to download this part of the application fee. However, the download is the need to bring data traffic charges, fees please consult your local operator. We recommend that you

WLAN Download the application environment, and in the absence of data traffic monthly package or packages will soon run out of the traffic situation, follow these steps to turn off the data connection and data roaming:

1 Select any of the following ways to turn off the data connection: Close **Main**

Menu -> Settings -> Data Connections ;shut down main menu

-> **Settings -> SIM Card Management -> Default settings** middle **Data**

Connections ; Close pull-down bar **Data Connections** switch. 2 Uncheck **Main**

Menu -> Settings -> SIM Card management -> Other

Settings -> International Roaming -> Data Roaming Lane hook

options. Since the user's personal data does not close the connection and data roaming traffic caused by the high cost of Lenovo side assumes no responsibility.

Q : Discovery system is becoming slower and how to deal with?

A : 1 , Smart phones and computers, may be after a long run more than one program will find the system gradually become "stuck", then restart the phone can solve the problem; 2 If the restart has not solve the problem, the recent recall whether you download and install some new third-party applications, enter

Main Menu -> Settings -> Applications The list of applications, try uninstalling recently installed program and then restart the phone; **3 If the above two methods can not solve your problem, then enter Main Menu -> Settings -> Backup and Reset -> Factory data reset , You can restore the phone back to factory settings, please note! Note that doing this before using the phone comes with backup and recovery tools to backup your important data, or you can use third-party tools.**

Q : How to deal with the battery is not durable?

A : Smart phones more for large-screen phone, and supports a number of features, if you are a long time online, watching videos, playing games, then the battery life will be reduced accordingly. So how can we extend the battery life as its service life? You do not need a wireless connection **at the time, closed WLAN ,Bluetooth, GPS , Exchange Synchronization** account, in dim light or at night, it is recommended that you lower the screen brightness, use of mobile phones can not only prolong the time, better protect your vision.

Special Note: This device uses "dual card dual standby single-pass" design, that is inserted into the phone at the same time in the two card can not use voice services also can not use the data access services. When a card number which is in a voice call, another card number can not receive calls at this time if there is an incoming call is just another card might hear "you dialed is not in service", "subscriber you dialed is temporarily Unable to connect, please try again later prompted to connect the "and so on. When one card is in a state of a data connection, another card

Unable to use the data access services. For this reason the above phone "dual card dual standby single-pass" design caused, regardless of the operator network status. Single-pass is because the device is a single-chip design, can dramatically increase the standby time, reduce power consumption. Advised to consult with local operators, the opening of "missed call reminder", "Call reminder", "secretarial services" business to avoid the above scenario dropped calls problem without reminders.

Article 3 chapter Installation and charging

3.1 Install mobile

1. Press the up arrow in FIG. (Diagonal corners firmly)

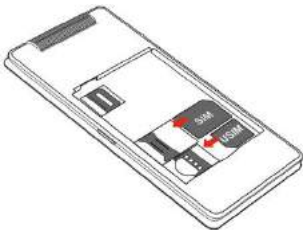
Remove the back cover.



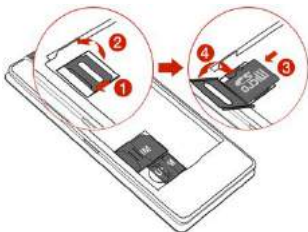
2. Press the arrow shown in FIG. USIM / SIM Card is inserted

USIM / SIM Slot, insert ensure USIM / SIM

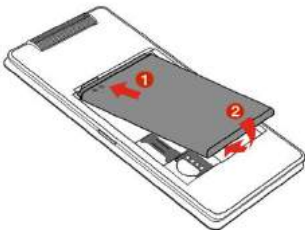
Metal card face down (USIM / SIM Metal contact area on the card is easily scratched, be careful to install).



3. The memory card into the card slot (you may need to purchase additional Buy a memory card), as shown below.



4. Battery shrapnel metal contacts corresponding to the ends of the fuselage, and Battery into the fuselage square grooves, as shown below.



5. The back cover gently on the body, and press the map

Pressing the down arrow shown, until the body is fully fit.



3.2 Remove the battery, USIM / SIM Cards and memory cards

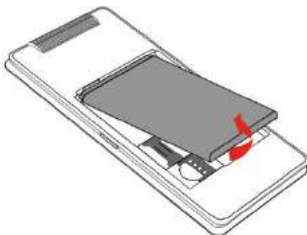
1. Phone off and remove the external power supply.

note :

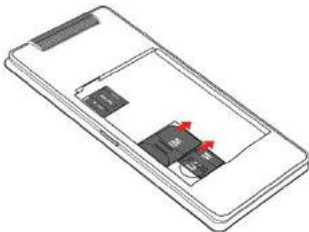
- With the power to remove the battery may be **damaged directly USIM / SIM Cards and mobile phones.**
- In the boot state directly unload the memory card may cause the transmission to the phone's file is missing or abnormal phenomena cause the phone not work properly.

2. Remove the back cover.

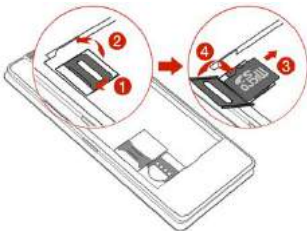
3. Press in the direction of the arrow in FIG remove the battery.



4. Direction of the arrow in the figure removed USIM / SIM card.

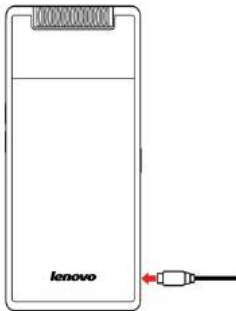


5. Remove the memory card from the slot, as shown below.



3.3 To charge the phone

The charger plugged in, and then the charger plug into the phone charging jack, as shown below:



note : Be careful not to forcibly pull the charger plug, as this may damage the phone or charger.

- Your phone comes with a battery before use must be fully charged.
- **Do not remove the battery when charging or USIM / SIM card.**
- If the battery runs out, the phone will automatically shut down.

3.4 Startup and shutdown

Make sure the battery is fully charged before turning it on. Press and hold the power button until the boot screen appears. **some USIM / SIM Card will PIN Code protection. If you have entered PIN Code prompt, enter your PIN code. initial PIN Code is generally 1234 .**

When turned on, if the inserted USIM / SIM Card is valid, the phone will automatically search for available networks. Press and hold the power button until the shutdown option appears, and then select Shut Down.

3.5 Security Code

This section describes the security code to avoid unauthorized use of your USIM / SIM card.

PIN code

For preventing users USIM / SIM Card is used illegally. If your phone has started PIN Code protection feature, turned on, the screen will display the input PIN Tip codes. **After three consecutive incorrect PIN code, USIM / SIM Card will be automatically locked. You must enter PUK Code to unlock it.**

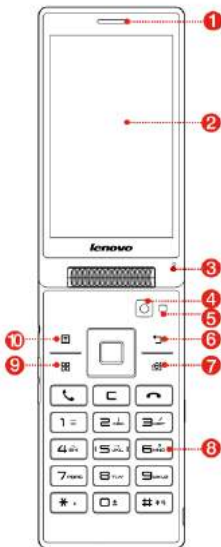
**PIN Code and USIM / SIM Card-related, but has nothing to do with the phone,
PIN Code provided by the network operator.**

PUK code

PUK Code is a personal unlocking code is used to unlock
because three consecutive incorrect PIN Code is locked
USIM / SIM card. If the cumulative 10 Second input errors
PUK code, USIM / SIM Card will expire. PUK Code provided by the
network operator.

Article 4 chapter Phone overview

4.1 Phone Appearance





No.	description	sequence number	description
1	earpiece	2	touch screen
3	microphone	4	camera
5	flash	6	return key
7	<u>Desktop switching key</u>	8	number key
9	<u>Home key</u>	10	<u>menu</u>
11	Power button	12	<u>Micro USB jack</u>
13	<u>Lights</u>	14	<u>Headphone jack</u>
15	volume button	16	<u>speaker</u>

4.2 Phone keypad description

button	description
Power button	Power Status: <ul style="list-style-type: none">• Short press on or off the screen backlight• Long press to bring up the options menu off the phone:<ul style="list-style-type: none">• Press, boot
menu	Options pop-up menu
return key	Return to previous menu
Home key	<ul style="list-style-type: none">• Press to return to the standby interface• Long press to open the list of applications running
Desktop switching key	Jane Eyre between the desktop and the desktop music switch (normal use only in idle screen)
volume button	Adjust the volume

Article 5 chapter Main Features Guide

5.1 dial number

When the network operator's logo appears on the phone screen, you can make or receive calls. Top right corner of the phone screen information bar shows the network signal strength. It affects call quality affected by barriers, so moving in a small range can effectively improve call quality.

National phone calls

Enter the phone number in the dial pad screen, then press the dial icon to start the call. After turning the other call status information will be displayed on the screen. End press the end call icon to hang up.

5.2 Contacts

You can use the Contacts feature to store contact information.

note : USIM / SIM The number of records stored in the card related to its capacity.

Article 6 chapter Enter the text

The phone has provided you input method. You can also download other input methods yourself installation.

In the phone allows the input function items are:

Input, edit short message; enter, edit contact name;

.....

Input

After selecting the input method, you can click the icon to switch input mode according to the input interface: digital, Chinese, symbol or letter.

You can also install itself other input methods.

Article 7 chapter Lenovo's mobile Internet products

If you purchased Lenovo mobile phone built-in "Lenovo Mobile Internet Products", you can directly use the corresponding function. If the phone is not built this feature, you need to think of other ways to log the site to achieve the corresponding function.

7.1 Music Store

Lenovo Music Store is to create an open, safe, local, social Android (Android) Application download platform, security is one of the Android application store currently rare. Legend Music Store application has a mass of genuine commitment to provide users without suction fees, no Trojan virus security application download service.

Legend Music Store is divided into Web , Phone with Pad

Three versions, depending on the platform user needs to provide personalized content and services.

There are two ways to access music stores:

- Users can log on Lenovo music store page:

<http://app.lenovo.com> ;

- End users can download the application by installing the music store customers. To ensure the synchronization of information can also be accessed in the music store, using the phone number or email as a registered user "Lenovo account."

Music store client download:

- **Login music store page <http://app.lenovo.com> And then click the button to download the home page;**
- Dimensional code Download:

Phone Edition Music Store downloads



Pad Edition Music Store downloads



More music store information, please pay attention to the music store Sina official microblogging: @ music store.

Welcome to search for "music store" for more exciting!

7.2 Shipping safety

Lenovo music the development of a security system and kernel defense, set anti-peeping, anti-smoking costs, loss of security, anti-virus and other functions in one smart phone security software.

A key physical examination

Advanced cloud killing technology, 5 Seconds faster killing, saving time and effort.

Proactively block

Provide tagging (designated interception), automatic block malware absorb costs, save traffic.

Rights management, extend the standby

Self-management software permissions, always turn off power program. We have the highest protection, superior anti-smoking costs the function, the complete elimination of malware peeping user privacy and calling, texting behavior.

7.3 cloud service

Lenovo cloud services in order to prevent the development of a personal mobile phone data loss, data backup and recovery to provide mobile phone service software. Through the network from your phone data backup to the cloud. Then by phone, tablet, or computer access to view and manage cloud information.

Cloud Services Website: <http://pim.lenovo.com> .

Complete data backup

Your phone text messages, call records and photos safely backed up to the cloud services cloud, safe and reliable, the data will never be lost!

Intelligence Cloud Management

be usable Web Page manage your data, Smart Merge contacts, data management easier!

Convenient one-click migration

A key backup and restore all phone data, with the latest Lenovo flow compression technology, more convenient and efficient, zero seconds

Replacement!

Easy pass and shoot

Upload the captured beautiful moments, you can cloud backup and cloud management.

Optimized communication records

During a backup, the cloud automatically merges the same contact, cloud contact may be less than a cell phone address book contacts, and convenient.

Full Platform Support

Andrews, iOS , Saipan full platform support, allowing easy replacement.




7.4 Eggplant fast pass

Eggplant fast pass Lenovo launched a mobile content transfer tool. By automatically established between the through phone data **transmission path realized without external WLAN** When the network or high-speed data network can send and receive data, because the process is transferred directly between phones, so users do not need to consume any Internet traffic. Simple user operation, no complicated pairing configuration without login and add friends. Allowing users to get rid of the data cable, Bluetooth and other complex way to share, in a simple and intuitive interaction allows users to experience the next line close socially shared with people happy.

Eggplant fast pass URL: <http://kc.lenovo.com/> .

Article 8 chapter Features Quick Reference

This section provides brief To illustrate phone Features.

Features	Explanation	select
call records View	recently been Dialed, received, missed calls	Main Menu -> Dial -> 
Quick Find Contacts	Quickly find a contact in Contacts	Main Menu -> Contacts -> 
Add contacts	Add a contact in Contacts	Main Menu -> Contacts -> 
Alarm clock In a	particular setting <u>Alarm time</u>	Main Menu -> Clock -> Alarm
Date and Time	Phone settings <u>Date and Time</u>	Main Menu -> Settings -> Date and Time
Display Language	Select Phone was The display language	Main Menu -> Settings -> Language & input -> Language

Features	Explanation	select
Ringtone Select	Phone to Ringing tones, message tones, touch tones, etc.	Main Menu -> Settings -> Profiles -> Standard -> Ringtones, etc.
volume Adjust call bell	Sound volume information and notification volume	Main Menu -> Settings -> Profiles -> Standard -> volume
Security Settings	You can set each Species password to protect your phone against unauthorized use	Main Menu -> Settings -> Security
reset	Part of the phone settings to the factory default settings	Main Menu -> Settings -> Backup and Reset -> Factory data reset

note: initial PIN Code is generally 1234 .

Article 9 chapter common problem

Any problems using the phone process, please refer to the following methods to solve them. If the problem persists, please contact the dealer or repair business with Lenovo.

Input screen appears PIN code

enter USIM / SIM Card brought effective PIN code. If you do not know PIN Code, please contact your network operator.

Input screen appears PUK code

Entered incorrectly three times PIN After the code, your USIM / SIM The card will be locked. To unlock, you must enter PUK Code, if you do not know PUK Code, please contact your network operator.

Screen appears insert USIM / SIM Card information

confirm USIM / SIM Card is installed correctly. an examination USIM / SIM Card is working properly, it may be defective

Or faulty. If so, please deliver network operators to solve.

Show out of service, network failure

Check the signal strength status icons. If there is no network signal, or you might be in the basement of a building in the network blind spots, go to other parts of the received signal. There is another case, you may not be in the network coverage area, you can ask your network operator to provide network services.

Poor sound quality, echo or noise makes conversation difficult

Hang up the phone, dial again, the network operator may connect you better call quality of a line.

Standby time is shorter

Location signal is weak, the phone for a long time to find the signal due. When you do not want to answer the call, you can temporarily shut down; or long battery life, battery life approaching, then replace the battery.

Phone can not boot

Check the battery level or charging. It can be used during charging, open the phone test it. If the phone is easy to make after standing for a long time over-discharged battery, this time will not turn on, charging no response after the start of a longer period, and so need to boot after power has been restored.

You can not send text messages

You want to check your service center number option is to see if you have set the SMS center number or wrong number, you may not open **SMS Service**, or **SMS sent object is invalid**, or **your local network operator** does not support this service (specifically consult your local network operator).

Can not be charged

There are three possibilities: First, cell phone chargers bad job, you can specify the service provider or the nearest dealer contact with Lenovo; the second is the ambient temperature is not suitable, you can replace the charging environment; third is bad, you can check the charger plug.

Contact data can not be added

Contacts memory is full, you can delete the unwanted part of the original entry.

Some features can not be selected

Do not subscribe to this service or the location of the network operator does not support this service. Please contact Lenovo designated service provider, dealer or network operator.

Article 10 chapter Technical Parameters

conventional

Product Name: TD-SCDMA / GSM Dual-mode digital mobile

phone

model: Lenovo A588t

system: Android

Basic parameters

Size: About 120.6 Mm × 62.5 Mm × 16.2

Millimeter

Weight: about 191 G (with battery) Battery

capacity: 2250 MAh Talk time: Up to 1612 Min

*** Standby time: Up 760.6 hour***

*** Theoretical value, depending on local network conditions.**

Article 11 chapter Important Safety Information - Electromagnetic Performance(SAR)

This model is consistent with the relevant mobile phone radio frequency electromagnetic radiation international and national regulatory requirements.

This model mobile phone is a radio transmitter and receiver. Its design and manufacturing standards without departing from the **International Commission on Non-Ionizing Radiation Protection (ICNIRP) Proposed RF (RF) Limit. These limits are part of comprehensive guidelines** and regulations applicable to the general public permitted levels of RF energy. These guidelines were developed by independent scientific organizations through periodic scientific studies and comprehensive assessment of the development. The guidelines include a substantial safety margin designed to assure the safety of all different ages and health status.

SAR (Specific Absorption Rate) Refers to the ratio of the absorption of electromagnetic energy, referred to as the Specific Absorption Rate, is a measure of a unit of measure, international norms stipulated used by the **public mobile phone SAR limit is not higher than the average per 10 Gram of tissue 2.0 Watts / kilogram (W / kg) * In order to provide more protection** to the public, taking into account

Variations in measurements, this limit already contains a certain safety margin.

SAR Test values are based on standard test procedures to the maximum output power of the mobile phone to test a variety of frequencies, the light of the test results is at the maximum power level is determined, and the actual use your mobile phone in general SAR This test is well below the maximum value. This is because we've designed this mobile phone can be operated in a variety of output power, and to use only the power required to the network level in practical work, under normal circumstances, the closer you are to a base station, mobile phone radiation the lower the power, and the specific absorption rate generated at this time is smaller.

After testing, the product of electromagnetic radiation specific absorption rate (SAR) Maximum value 0.335 W / Kg ,In line with national standards GB 21288-2007 Requirements.

* They may differ by country or region, test environment, test the network band and monomers vary specific absorption rate, and using a cell phone accessory Accessories may result in different SAR.

Article 12 chapter Important safety information - medical equipment

Any radio transmitting equipment (including this equipment) may be inadequately protected medical devices interfere with the function. If you have questions or are unsure of the medical device can be shielded from external RF energy to medical personnel or medical device consulting firms. In prohibiting the use of electronic devices or disable the mobile wireless transmission function place, please comply with the relevant

Pacemaker

Persons with pacemakers when using this product, please refer to the following recommendations:

- We should always keep the phone and the pacemaker is greater than the **15.3 Cm (about 6 inch)**.
- When carrying the phone should not be placed on the chest pocket.
- Should use different sides to wear pacemakers ear receiving calls to minimize the potential for interference.

Hearing aids, cochlear implants

助听器、植入耳蜗的使用者在使用本产品时，请咨询授权医疗人员并参考医疗设备提供商的说明。

若怀疑有干扰产生，请关机并将手机移至较远的位置。

中国 RoHS

为满足中华人民共和国电子电气产品有害物质限制相关的法律法规和其他要求，联想公司对本产品中有害物质，按部件分类，声明如下。

部件名称	有害物质					
	铅 (Pb)	汞 (Hg)	镉 (Cd)	六价铬 (Cr(VI))	多溴联苯 (PBB)	多溴二苯醚 (PBDE)
印制电路板 组件	X	O	O	O	O	O
显示屏	X	O	O	O	O	O
外观件	X	O	O	O	O	O
电池	X	O	O	O	O	O
充电器	X	O	O	O	O	O
附件 (耳机、 USB 线)	X	O	O	O	O	O

本表格依据 SJ/T 11364 的规定编制。

○：表示该有害物质在该部件所有均质材料中的含量均在

GB/T 26572 规定的限量要求以下。

×：表示该有害物质至少在该部件的某一均质材料中的含量超出 GB/T 26572 规定的限量要求。

注：表中标记“×”的部件，皆因全球技术发展水平限制而无法实现有害物质的替代。



在中华人民共和国境内销售的电子电气产品必须标识此标志，标志内的数字代表在正常使用状态下的产品的环保使用期限。